

Swivel castor CD 200 TLSBAK

Transport Series CD - Wheel TLSBA

-20 °C - +80 °C

+++
swivels easily

+++
wear resistant

+++
shock proof

+++
floor protective

+++
weather proof

Wheel



Tread: cast polyurethane, 85 ± 2 Shore A crowned - soft

Core: Die-cast aluminium alloy

Fork



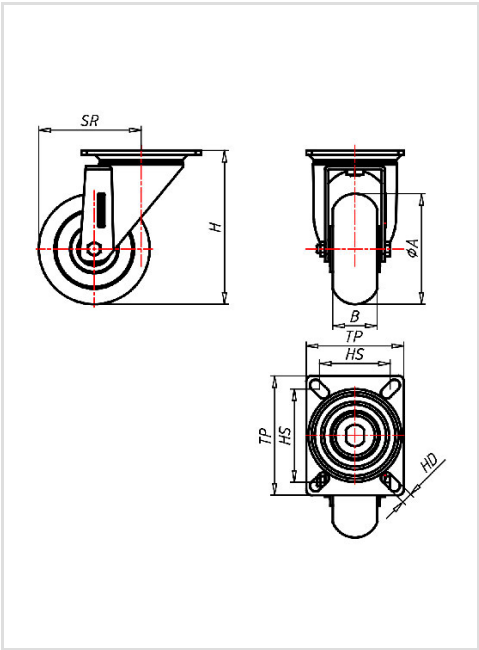
Finish: electro-zinc plated, double ball bearing – revited, hardened steel balls thermoplastic dust protection ring, wheel axle bolted, total lock

Swivel castor	Wheel-Ø A x width B mm: 200x50
Load Capacity kg:	300
Load capacity tested according to EN 12530 and EN 12527	
Overall height H mm:	240
Dimension of top plate TP mm:	135x110
Hole spacing HS mm:	105x80
Hole-Ø HD mm:	11
Swivel radius SR mm:	161
Wheel bearing:	Ball bearing

Advantages

- ✓ crowned soft tread makes it very economic
- ✓ very silent in motion
- ✓ very low rolling resistance
- ✓ very revving
- ✓ high abrasion and tear resistance
- ✓ good chemical resistance

©Copyright 2024 Rollenbau GmbH, www.rollenbau.at 20.05.2024



Applications

- Metal-Technology
- Workshops
- Dollies
- Carpentry
- Building-Industry